

# CONVENIENT, PRACTICAL FEATURES

**Internal solar LED lighting**  
2 LED lights in the cabin

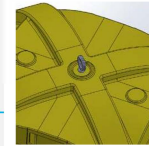
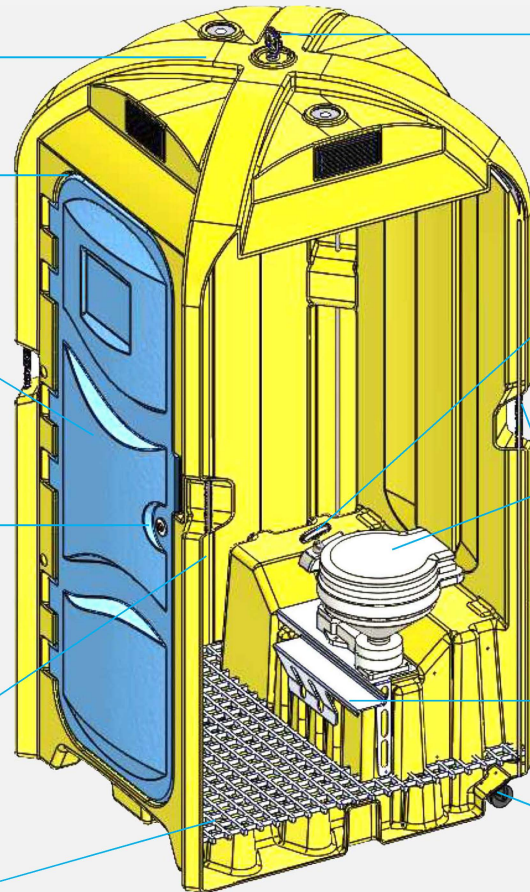
**Rubber sealed door frame**  
eliminates draughts

**HSE compliant sink**  
hot water hand wash (internal  
Li battery powers hot water)

**Magnetic door closure**  
secures unlocked door in  
high wind situations and DDA  
compliant door handle

**Bio bin**  
Sanitary disposal units

**Floor level vents**  
Plus overhead vents allow for  
natural circulation of fresh air



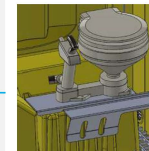
**Single lifting eye**  
allowing the Davit hook to be  
80cm lower than a 4 sling 5  
shackle



**Twist / lock toilet pump**  
Taller porcelain bowl utilises  
one way valve pump  
technology



**Porcelain marine toilet**  
Patented magnetic seat lifting  
design negates the  
requirement for a separate  
urinal and raises the seat with  
lid every time, improving  
hygiene and reducing odours



**Heel step**  
designed for human factors  
delivers the perfect NHS  
recommended posture for  
seated use.



**Wheels and handles**  
Easier manoeuvrability over  
grid flooring or softer surfaces

